



Institute of Electrical Inspectors

ACN 000 049 276

ABN 31 000 049 276

PO Box 411
Essendon North,
Victoria 3041

Ph: 03 9879 0442
Fax: 03 9379 1678
www.iei.org.au

Email: secretary@iei.org.au

Regulation 212 of the Electricity Safety (Installations) Regulations that required bonding of the service line Neutral conductor was suspended in January 2010 after consultation with the Industry.

Since then, recommendations regarding other means of insulation to remove the possibility of exposed metal becoming live have been sent to Energy Safe Victoria without reply. Discussion regarding this issue has been documented in the autumn edition of "Electrical Inspections"

The new requirement regarding extra insulation of consumer's mains: **From 1st July all raiser brackets to be internally lined with HD flexible conduit protruding 300mm past end (12 month moratorium).**

Some examples of the new extra insulation requirements under this regulation 212 have been provided for your information below.

80 Amp Clipsal FOLCB with 16mm² TPS 2 core TPS cable in 25mm HD corrugated conduit mounted to metallic fascia. (Front and Rear view)



600mm single phase riser bracket with 16mm² TPS 2 core Mains cable in 25mm HD corrugated conduit.





Institute of Electrical Inspectors

ACN 000 049 276

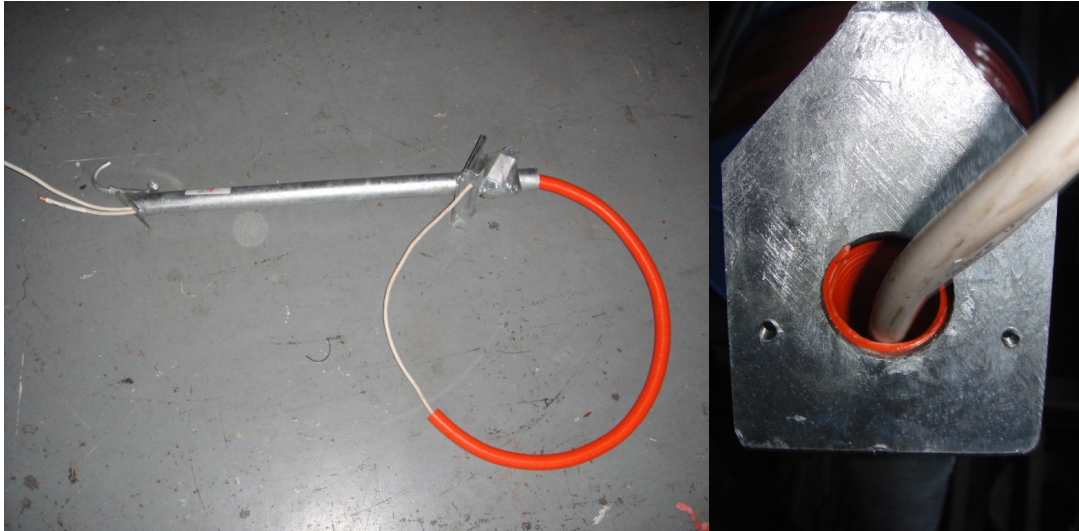
ABN 31 000 049 276

PO Box 411
Essendon North,
Victoria 3041

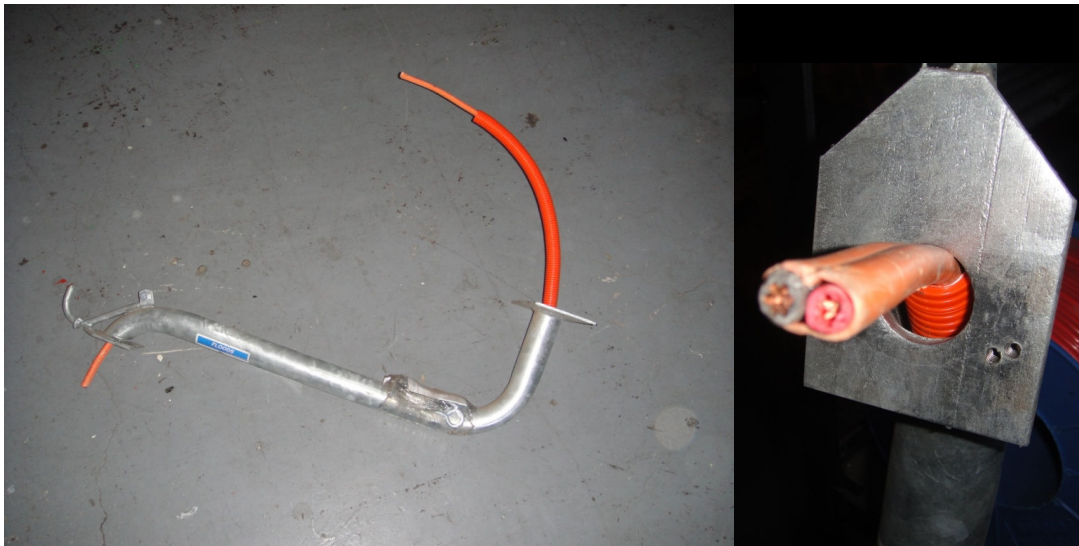
Ph: 03 9879 0442
Fax: 03 9379 1678
www.iei.org.au

Email: secretary@iei.org.au

900mm single phase riser bracket with 16mm² SDI Mains cable in 32mm HD corrugated conduit.



900mm single phase fascia mount raiser bracket with 16mm² TPS 2 core Mains cable in 25mm HD corrugated conduit. 32mm orange conduit will not fit through the bends on this bracket.



Quick Reference:

Single phase:

16mm² TPS cable in 25mm HD corrugated conduit will fit into 600mm riser and 900mm fascia brackets

16mm² SDI cable in 32mm HD corrugated conduit will fit into 900mm riser bracket



Institute of Electrical Inspectors

ACN 000 049 276

ABN 31 000 049 276

PO Box 411
Essendon North,
Victoria 3041

Ph: 03 9879 0442
Fax: 03 9379 1678
www.iei.org.au

Email: secretary@iei.org.au

3 phase 80 Amp FOLCB with 4 x 16mm² SDI cables in 40mm HD conduit attached to metallic fascia.



Quick Reference:

Three Phase:

16mm² SDI cable in 40mm HD corrugated conduit will fit into three phase 900mm riser bracket